

YG2-94f3

Pulse Sequence: s2pul

Solvent: CDCl3

Ambient temperature

File: YG2-94f3

INOVA-400 "fid"

PULSE SEQUENCE

Pulse 47.6 degrees

Acq. time 1.638 sec

Width 5000.0 Hz

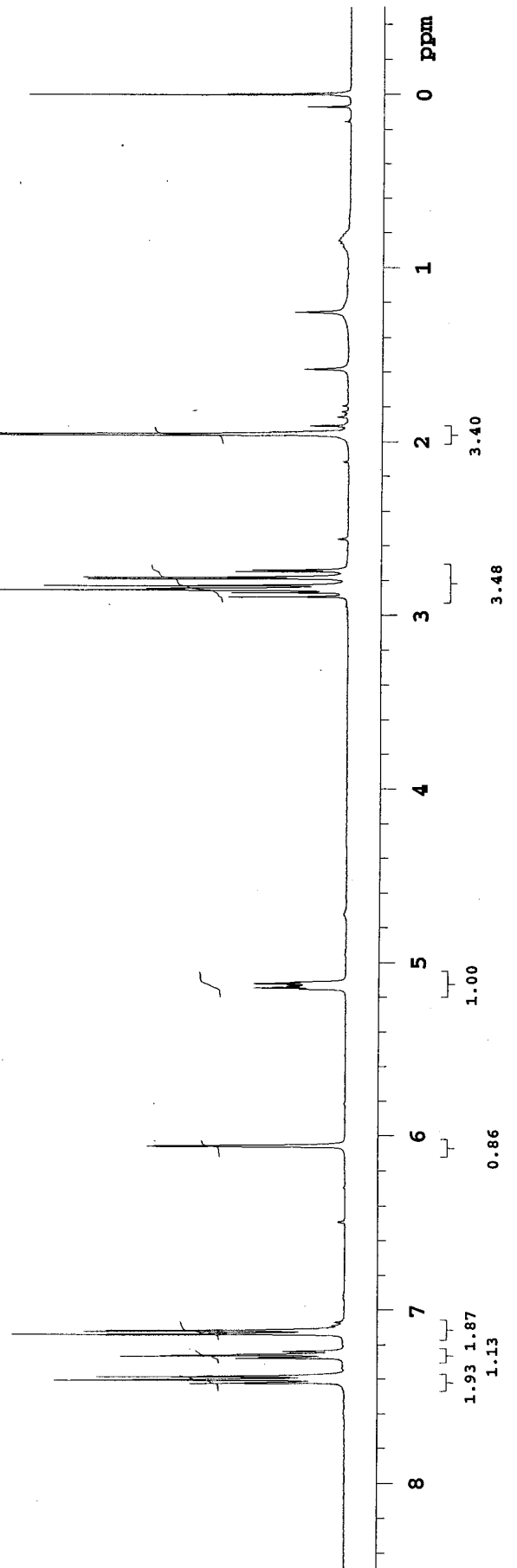
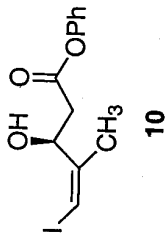
16 repetitions

OBSERVE H1, 399.7532394 MHz

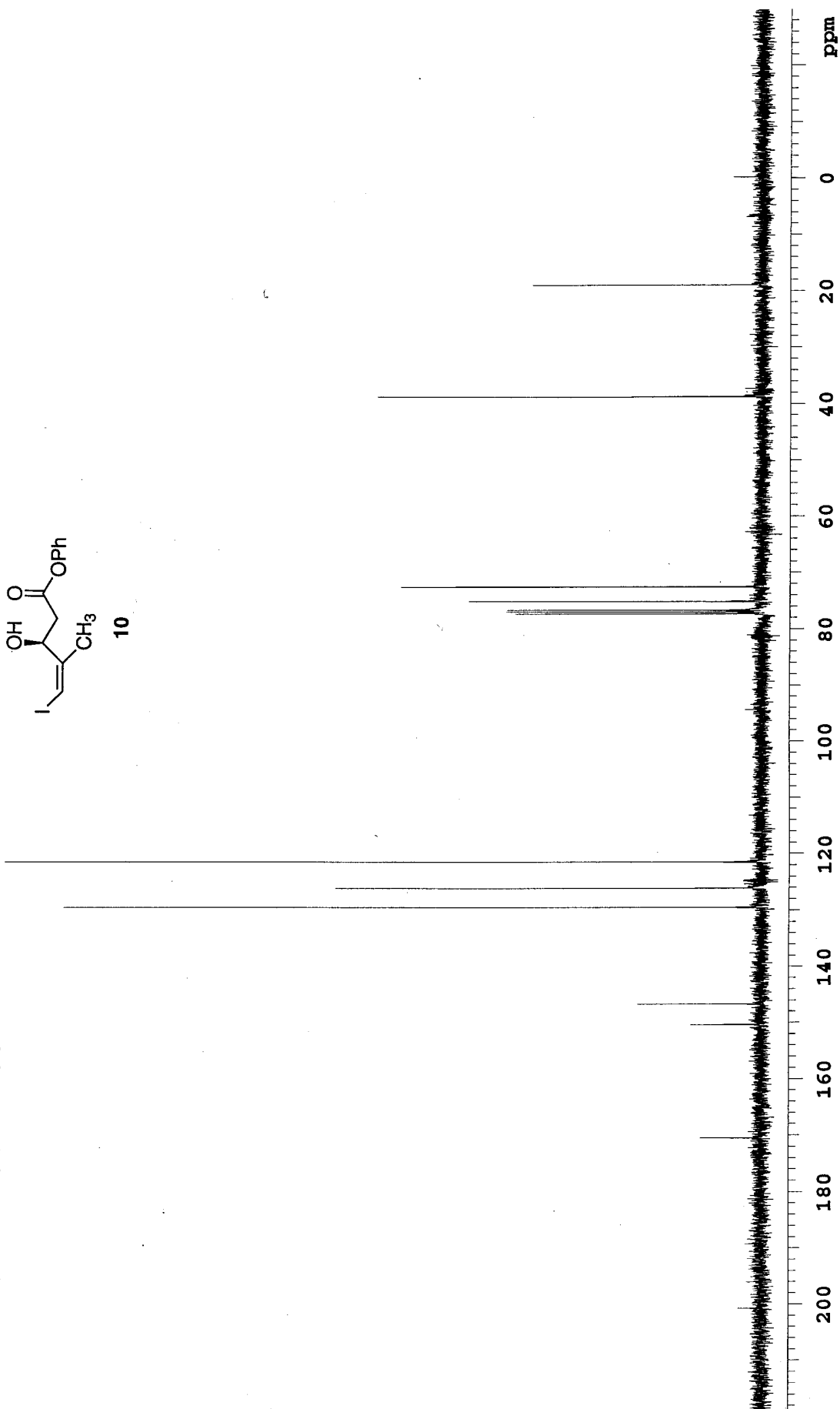
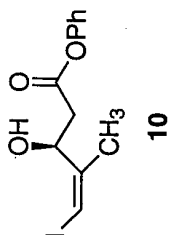
DATA PROCESSING

Ft size 16384

Total time 0 min, 26 sec



INDEX	FREQUENCY PPM	HEIGHT
1	17135.775	10.8
2	15111.635	12.5
3	14745.413	21.9
4	13012.724	123.1
5	12671.680	75.1
6	12208.561	133.5
7	7771.933	43.5
8	7739.889	45.1
9	7707.844	44.9
10	7554.489	51.6
11	7295.081	63.7
12	3896.845	67.8
13	1906.276	40.6



yt2-108cruda f1

Pulse Sequence: s2pul

Solvent: CDCl3

Ambient temperature

INOVA-400 "fid"

PULSE SEQUENCE

Pulse 47.6 degrees

Acq. time 1.638 sec

Width 5000.0 Hz

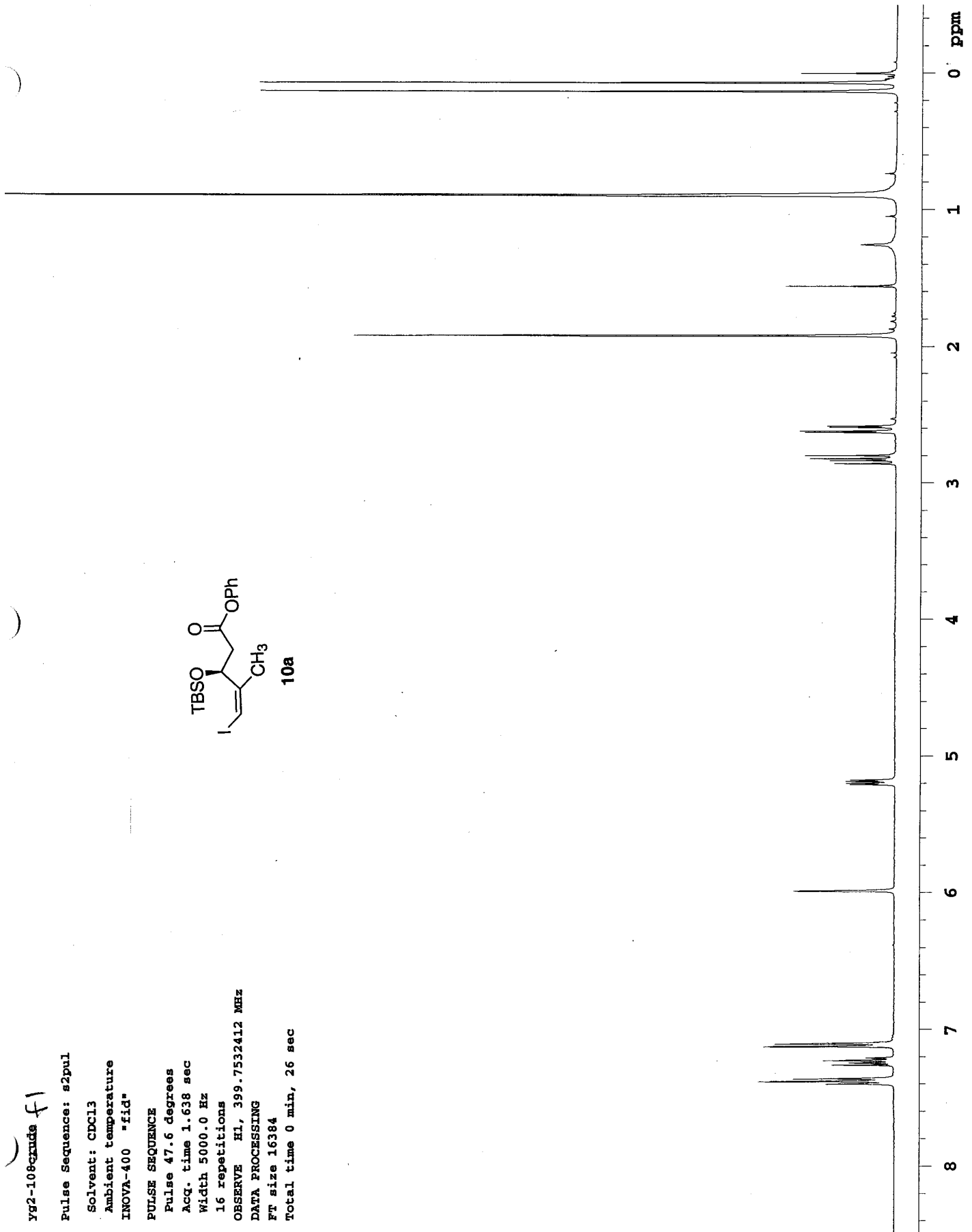
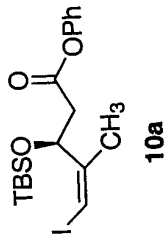
16 repetitions

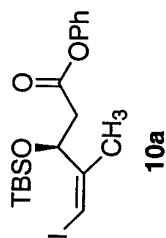
OBSERVE H1, 399.7532412 MHz

DATA PROCESSING

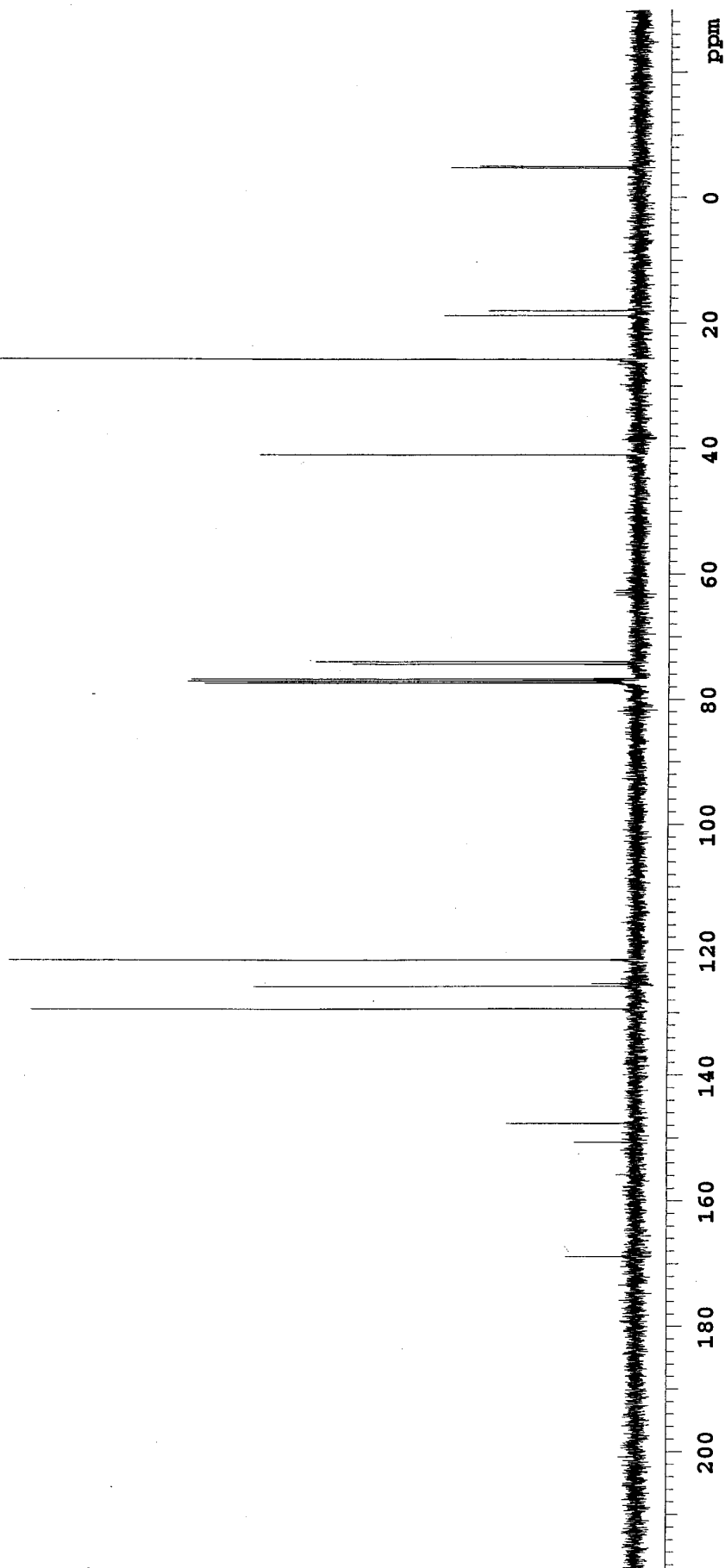
FT size 16384

Total time 0 min, 26 sec





INDEX	FREQUENCY	PPM	HEIGHT
1	16964.108	168.767	11.2
2	15145.205	150.672	9.8
3	14842.309	147.658	20.7
4	13002.806	129.358	96.1
5	12640.398	125.753	60.7
6	12216.954	121.540	99.7
7	7771.933	77.319	68.7
8	7739.889	77.000	71.4
9	7707.844	76.681	70.8
10	7472.852	74.343	45.2
11	7430.126	73.918	51.1
12	4117.341	40.961	60.1
13	2582.260	25.690	177.0
14	1882.624	18.729	30.9
15	1805.564	17.963	23.9
16	-478.746	-4.763	30.0
17	-506.976	-5.044	25.4



YG2-132f1

Pulse Sequence: s2pul

Solvent: CDCl3

Ambient temperature

INOVA-400 "fid"

PULSE SEQUENCE

Pulse 47.6 degrees

Acq. time 1.638 sec

Width 5000.0 Hz

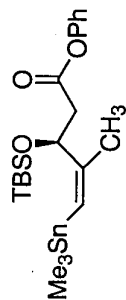
16 repetitions

OBSERVE E1, 399.7532431 MHz

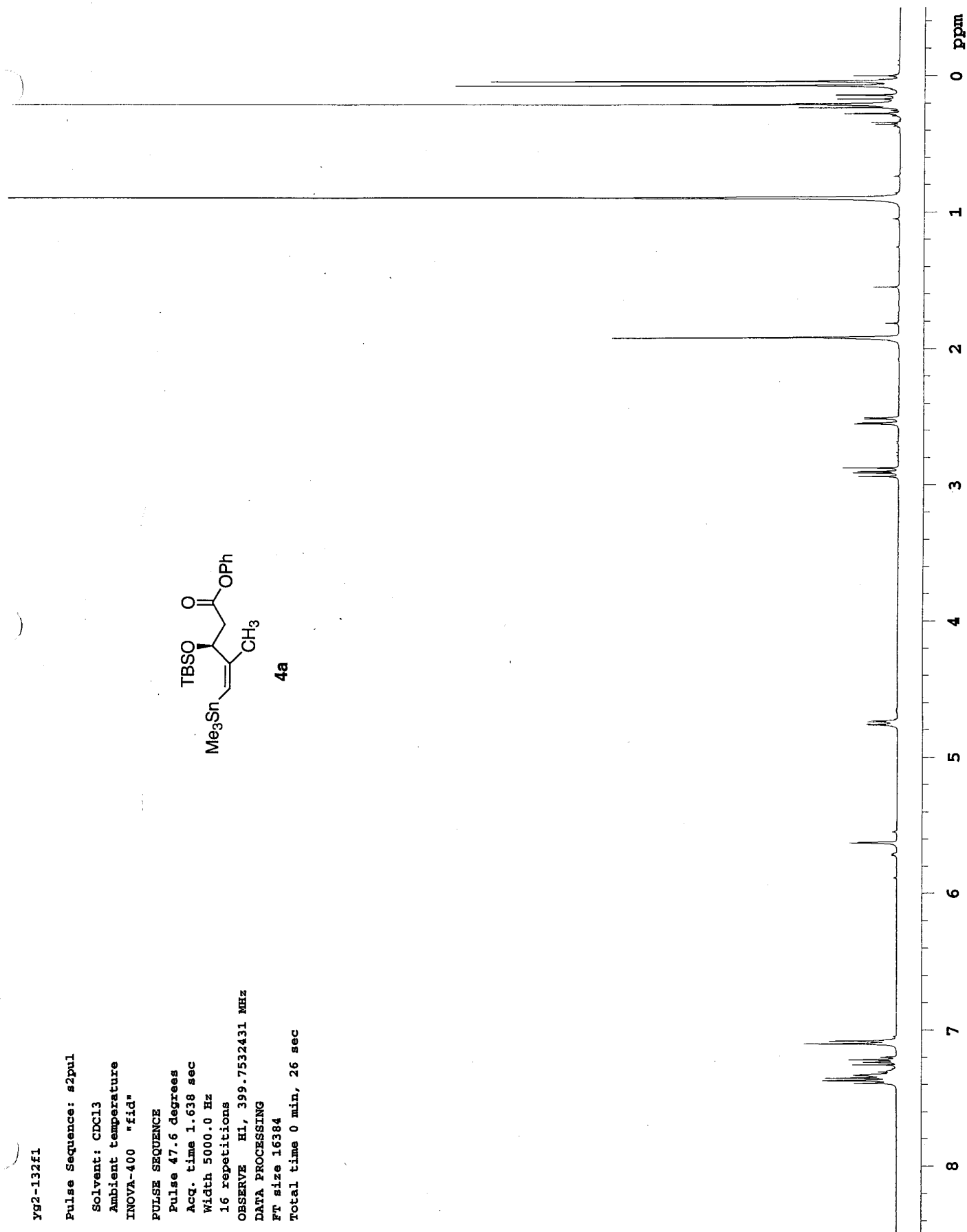
DATA PROCESSING

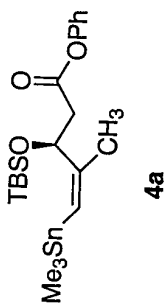
FT size 16384

Total time 0 min, 26 sec

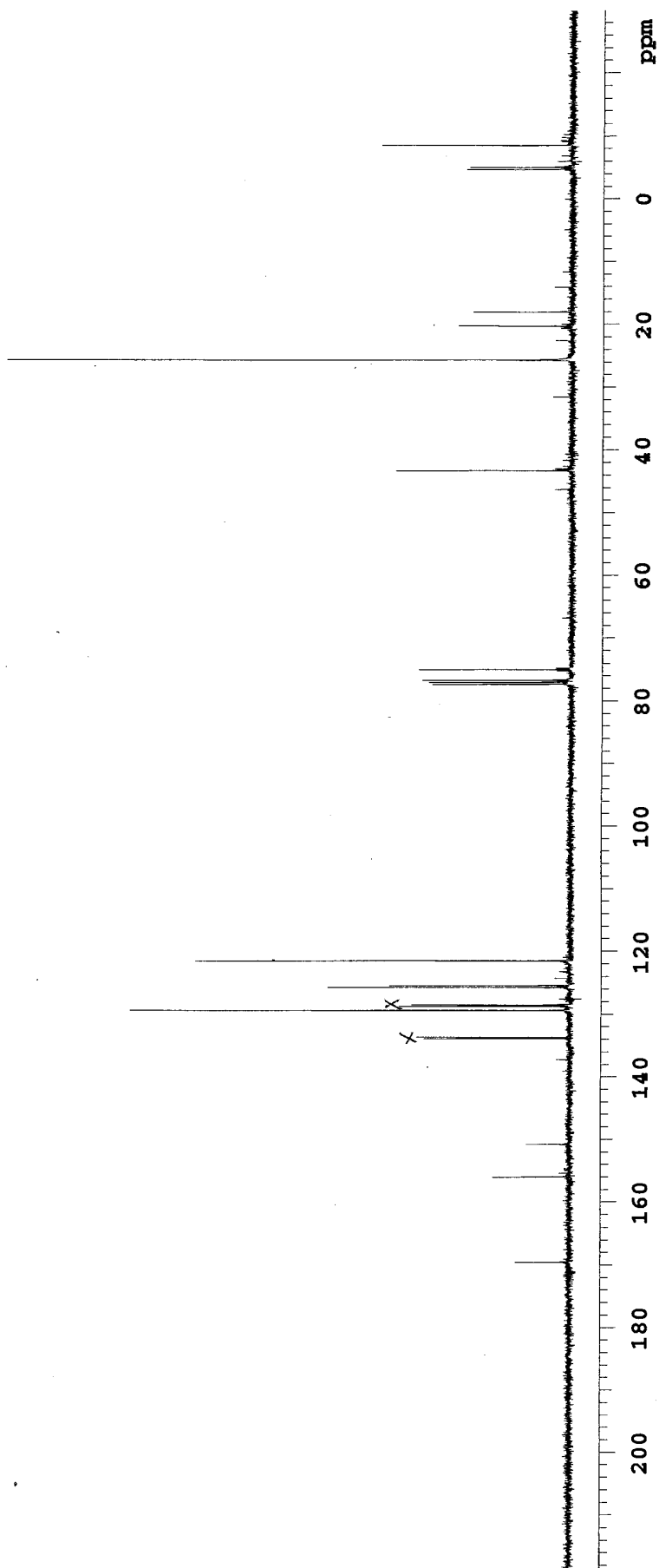


4a





INDEX	FREQUENCY	PPM	HEIGHT
1	17039.641	169.518	8.5
2	15672.412	155.916	12.1
3	15151.309	150.732	6.9
4	13451.428	133.821	23.0
5	13431.591	133.624	24.3
6	13001.280	129.343	69.2
7	12934.902	128.682	26.9
8	12916.591	128.500	24.9
9	12909.724	128.432	24.5
10	12633.532	125.684	38.1
11	12605.302	125.403	28.4
12	12212.376	121.494	58.8
13	7771.933	77.319	21.9
14	7739.889	77.000	22.4
15	7707.844	76.681	23.4
16	7539.229	75.004	23.9
17	4351.571	43.291	27.7
18	2589.127	25.758	7.5
19	2579.972	25.667	89.1
20	2039.794	20.293	18.0
21	1813.194	18.038	15.6
22	-473.405	-4.710	16.7
23	-510.027	-5.074	16.2
24	-859.464	-8.550	29.9



Y93-59f1

Pulse Sequence: s2pul

Solvent: CDCl3

Ambient temperature

INOVA-400 "fid"

PULSE SEQUENCE

Pulse 47.6 degrees

Acq. time 1.638 sec

Width 5000.0 Hz

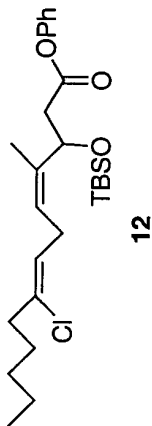
32 repetitions

OBSERVE H1, 399.7532400 MHz

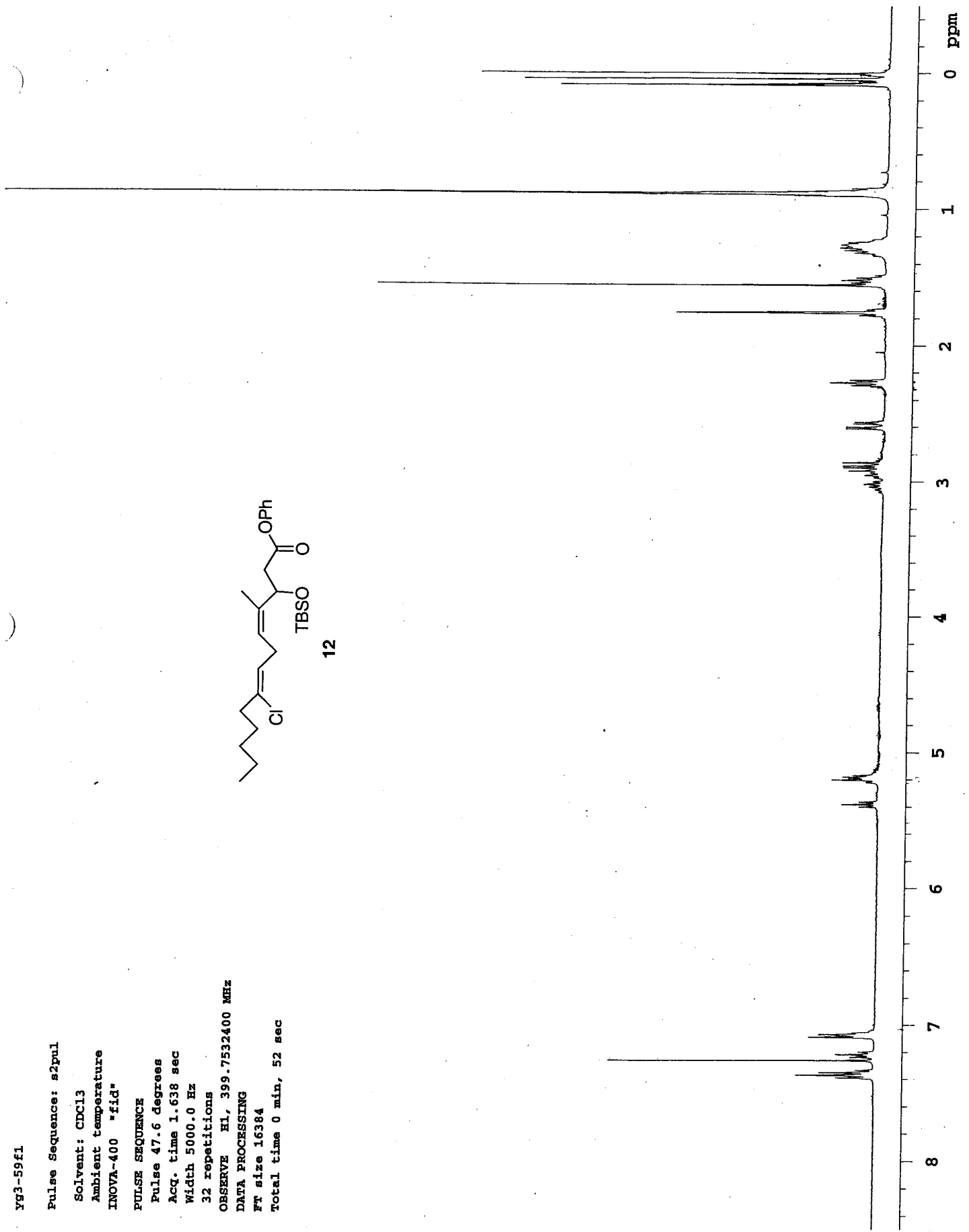
DATA PROCESSING

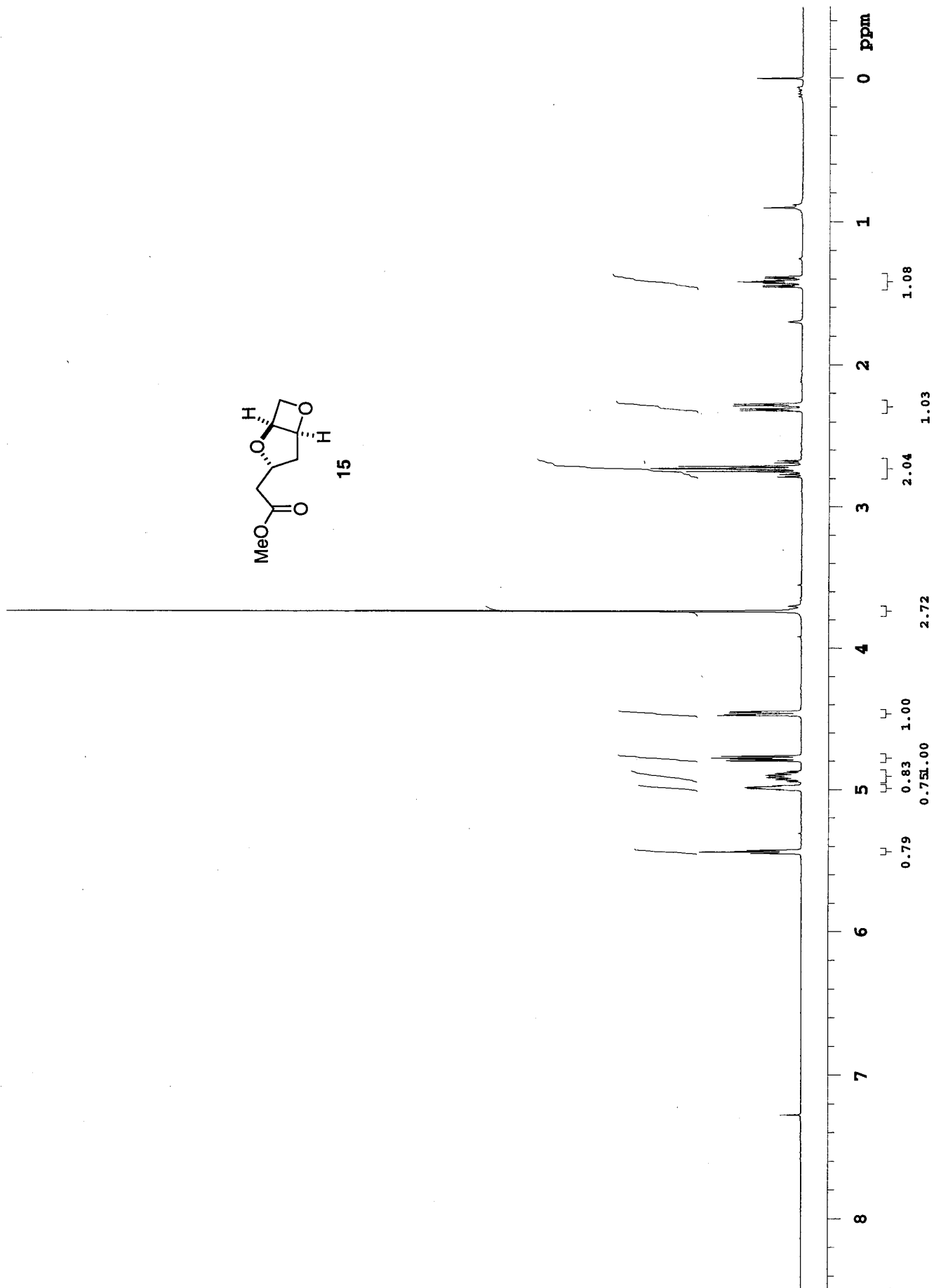
Ft size 16384

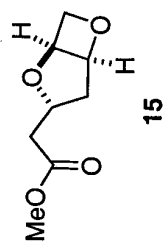
Total time 0 min, 52 sec



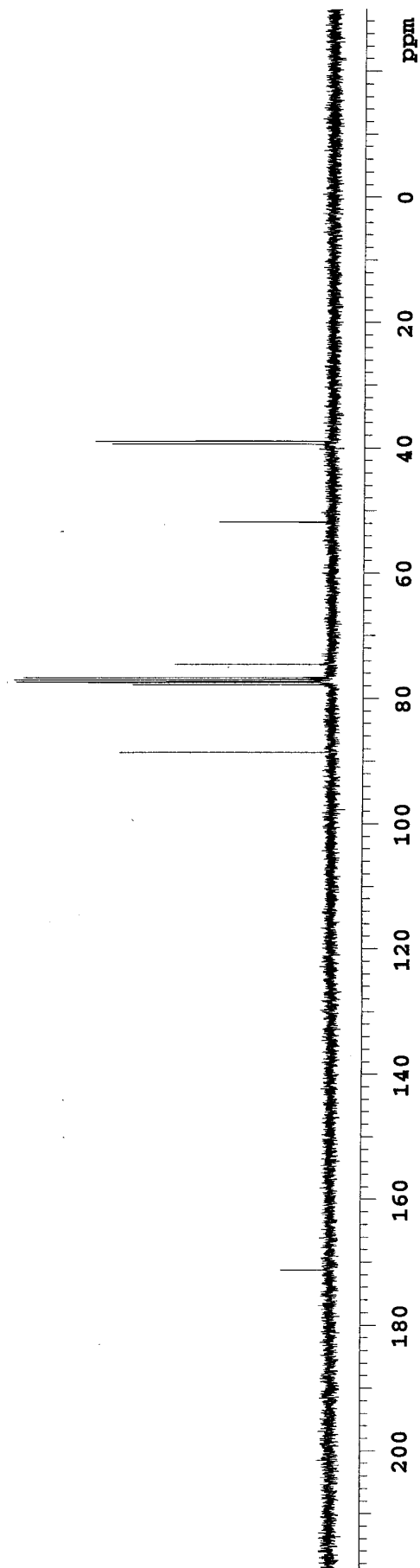
12







INDEX	FREQUENCY PPM	HEIGHT
1	17213.597	171.249
2	8902.644	88.568
3	7816.948	77.767
4	7784.903	77.448
5	7771.933	77.319
6	7739.889	77.000
7	7707.844	76.681
8	7495.741	74.571
9	5209.904	51.831
10	3960.934	39.405
11	3914.393	38.942



y98-45crude

Pulse Sequence: s2pul

Solvent: CDCl3

Ambient temperature

INOVA-500 "cosy"

Pulse 51.3 degrees

Acq. time 1.638 sec

Width 5000.0 Hz

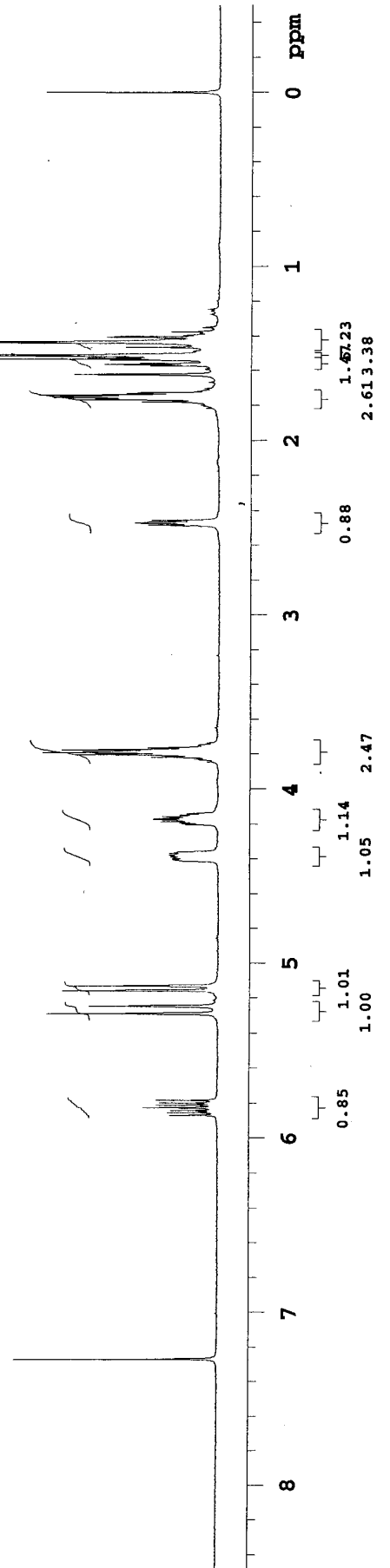
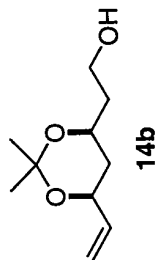
16 repetitions

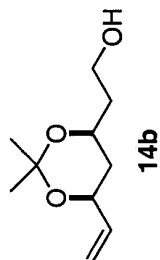
OBSERVE H1, 399.7532382 MHz

DATA PROCESSING

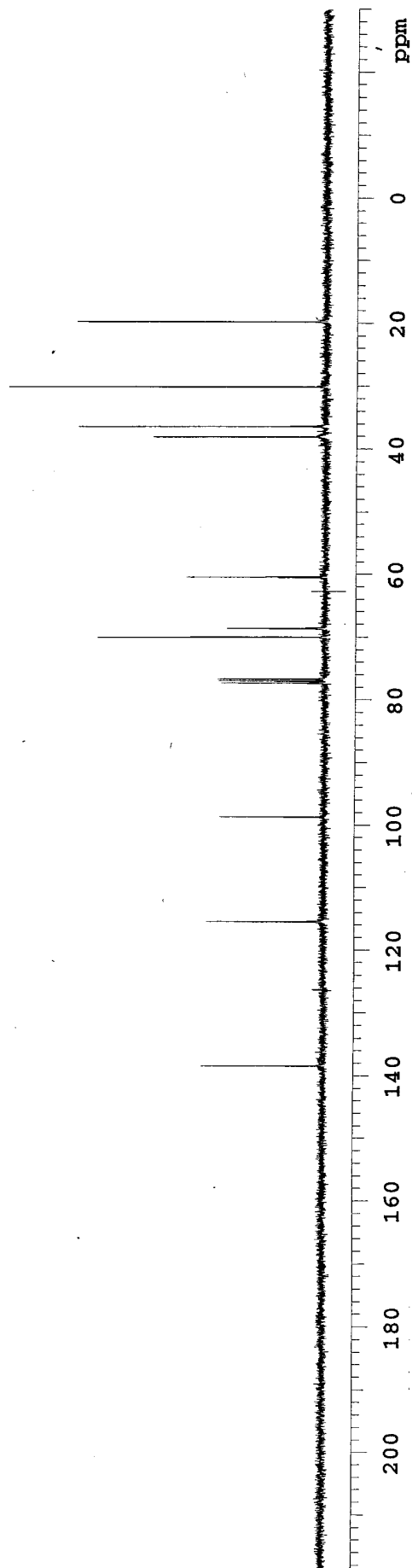
Ft size 16384

Total time 0 min, 26 sec





INDEX	FREQUENCY	PPM	HEIGHT
1	13910.732	138.390	19.3
2	11603.532	115.437	18.6
3	9918.911	98.678	16.6
4	7771.933	77.319	16.4
5	7739.889	77.000	16.8
6	7707.845	76.681	17.1
7	7037.963	70.017	35.9
8	6896.815	68.613	15.6
9	6072.052	60.408	22.0
10	3824.364	38.047	27.3
11	3658.038	36.392	39.1
12	3027.068	30.115	50.0
13	1984.098	19.739	39.4



yg5-134f1

Pulse Sequence: s2pul

Solvent: CDCl3

Ambient temperature

INOVA-400 "fid"

PULSE SEQUENCE

Pulse 51.3 degrees

Acq. time 1.638 sec

Width 5000.0 Hz

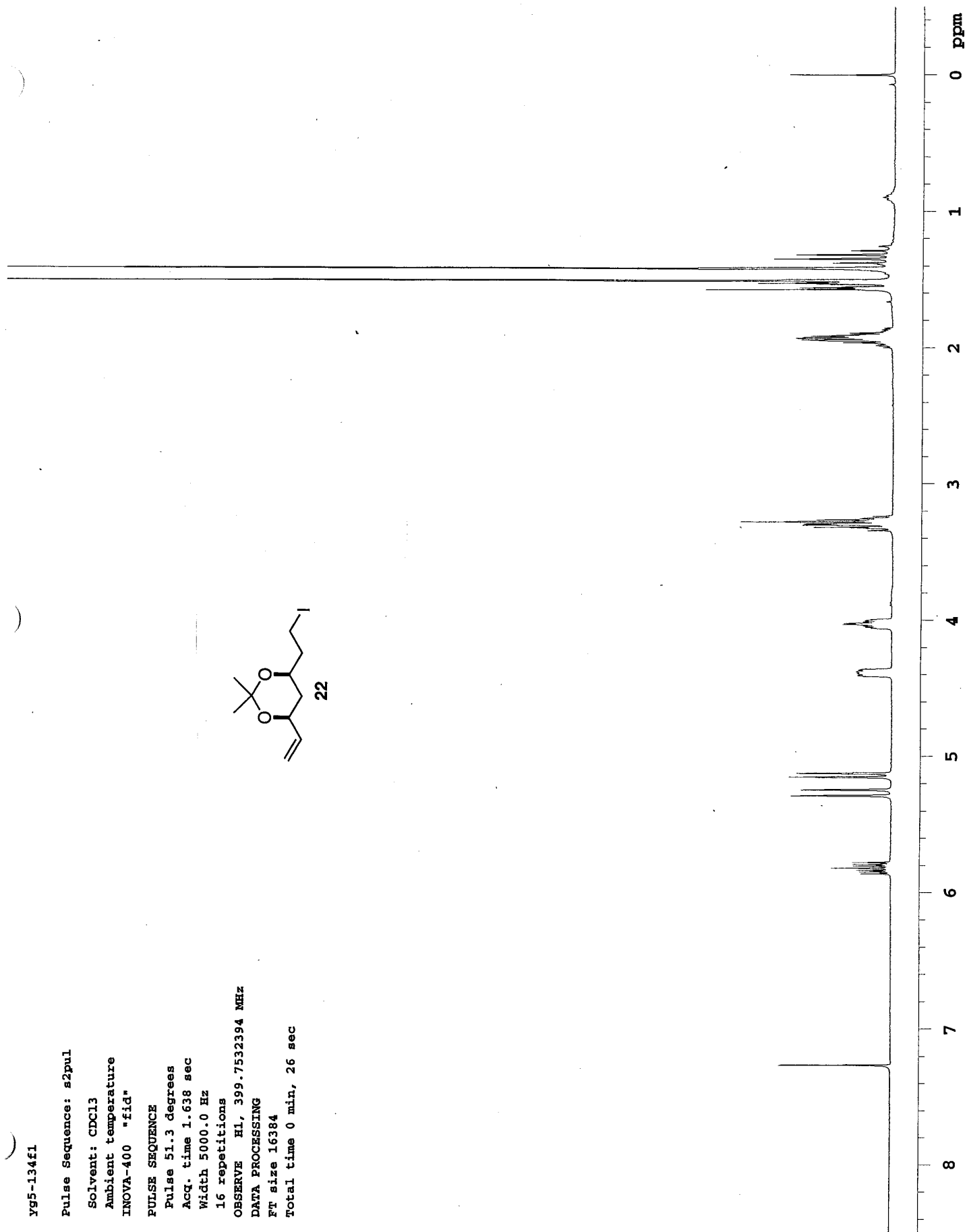
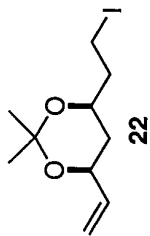
16 repetitions

OBSERVE H1, 399.7532394 MHz

DATA PROCESSING

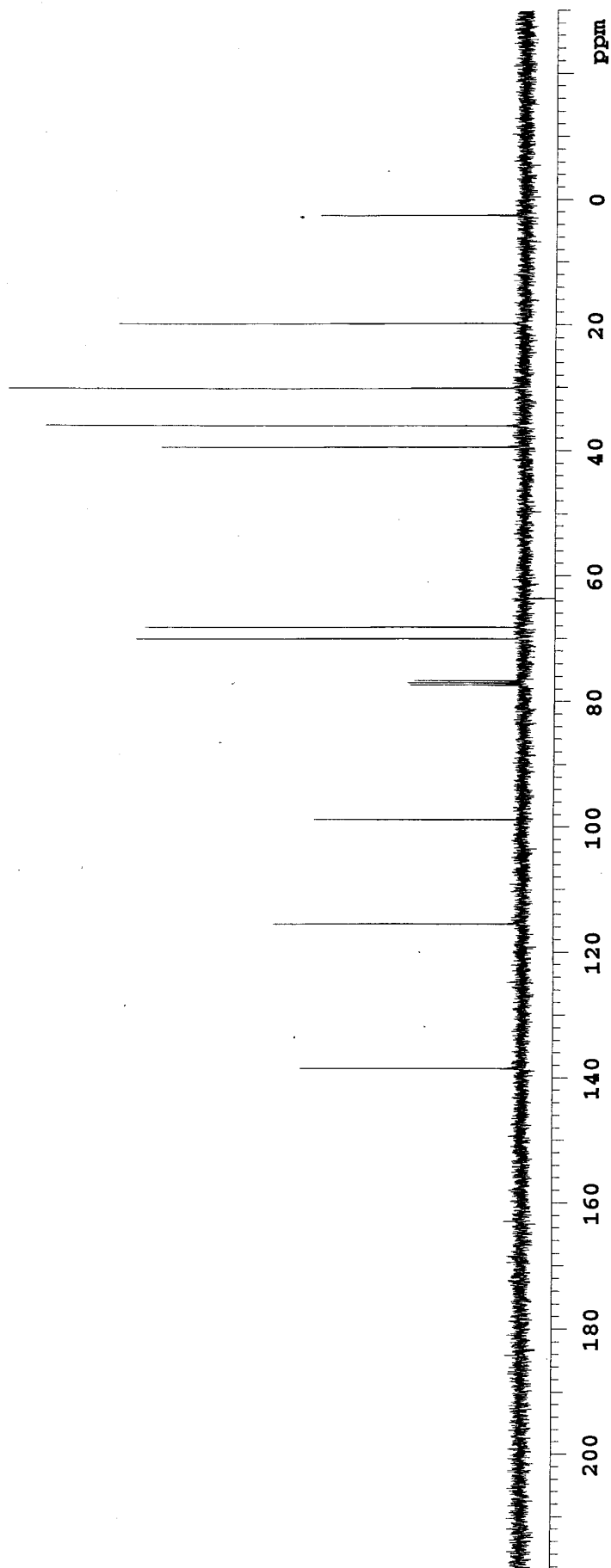
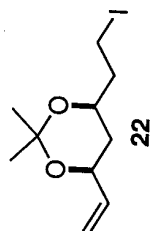
FT size 16384

Total time 0 min, 26 sec



16
137710

INDEX	FREQUENCY	PPM	HEIGHT
1	13918.361	138.466	35.1
2	11608.873	115.490	39.4
3	9228.829	98.777	33.1
4	7771.170	77.311	18.1
5	7739.889	77.000	18.5
6	7707.081	76.674	17.4
7	7038.726	70.025	61.4
8	6852.563	68.172	60.0
9	3961.697	39.413	57.6
10	3619.890	36.012	75.9
11	3021.727	30.062	81.7
12	1986.387	19.761	64.4
13	250.647	2.494	32.4



Y96-10f1

Pulse Sequence: s2pul

Solvent: CDCl3

Ambient temperature

INOVA-400 "fid"

PULSE SEQUENCE

Pulse 51.3 degrees

Acq. time 1.638 sec

Width 5000.0 Hz

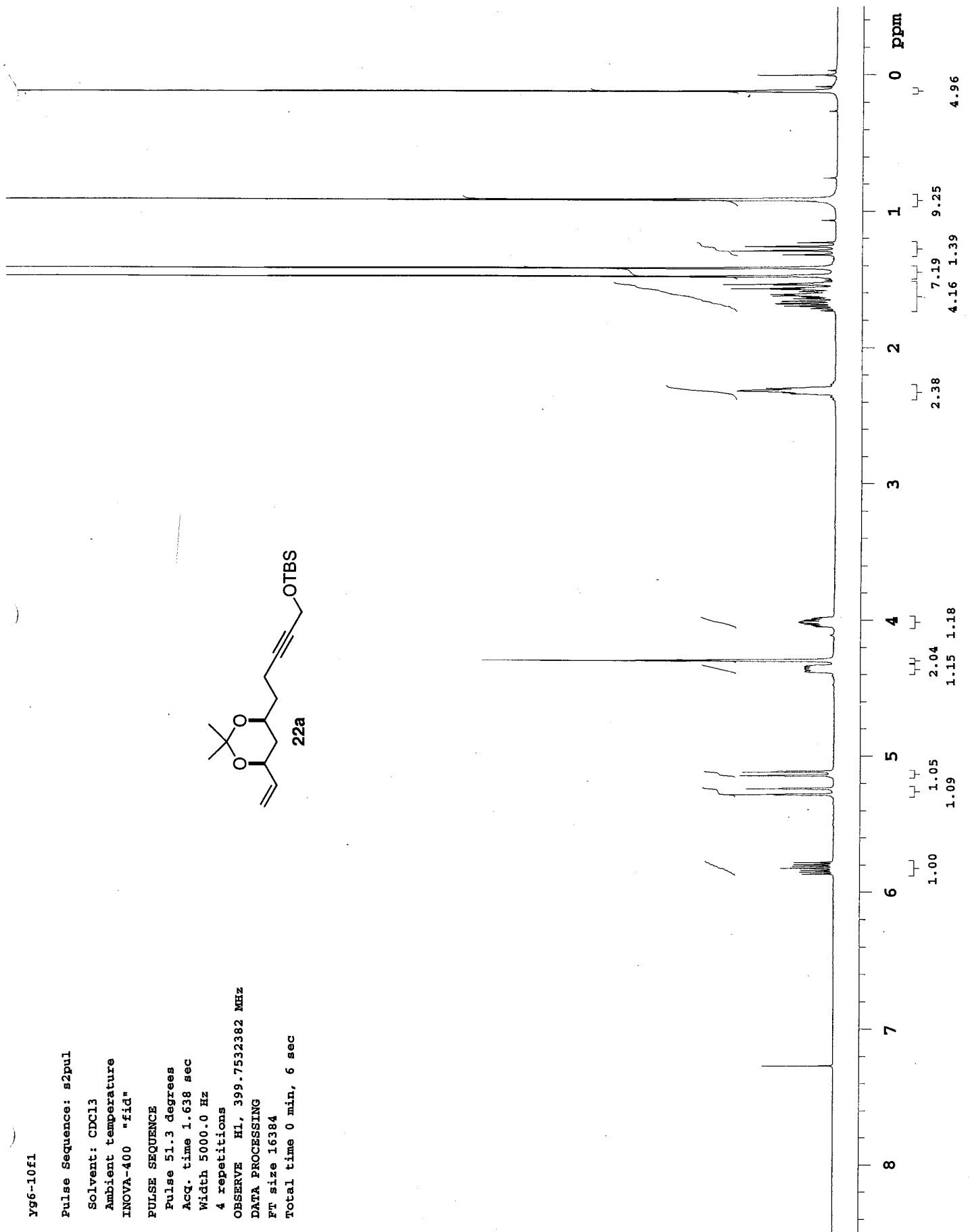
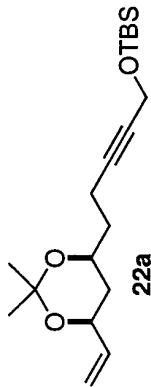
4 repetitions

OBSERVE HL, 399.7532382 MHz

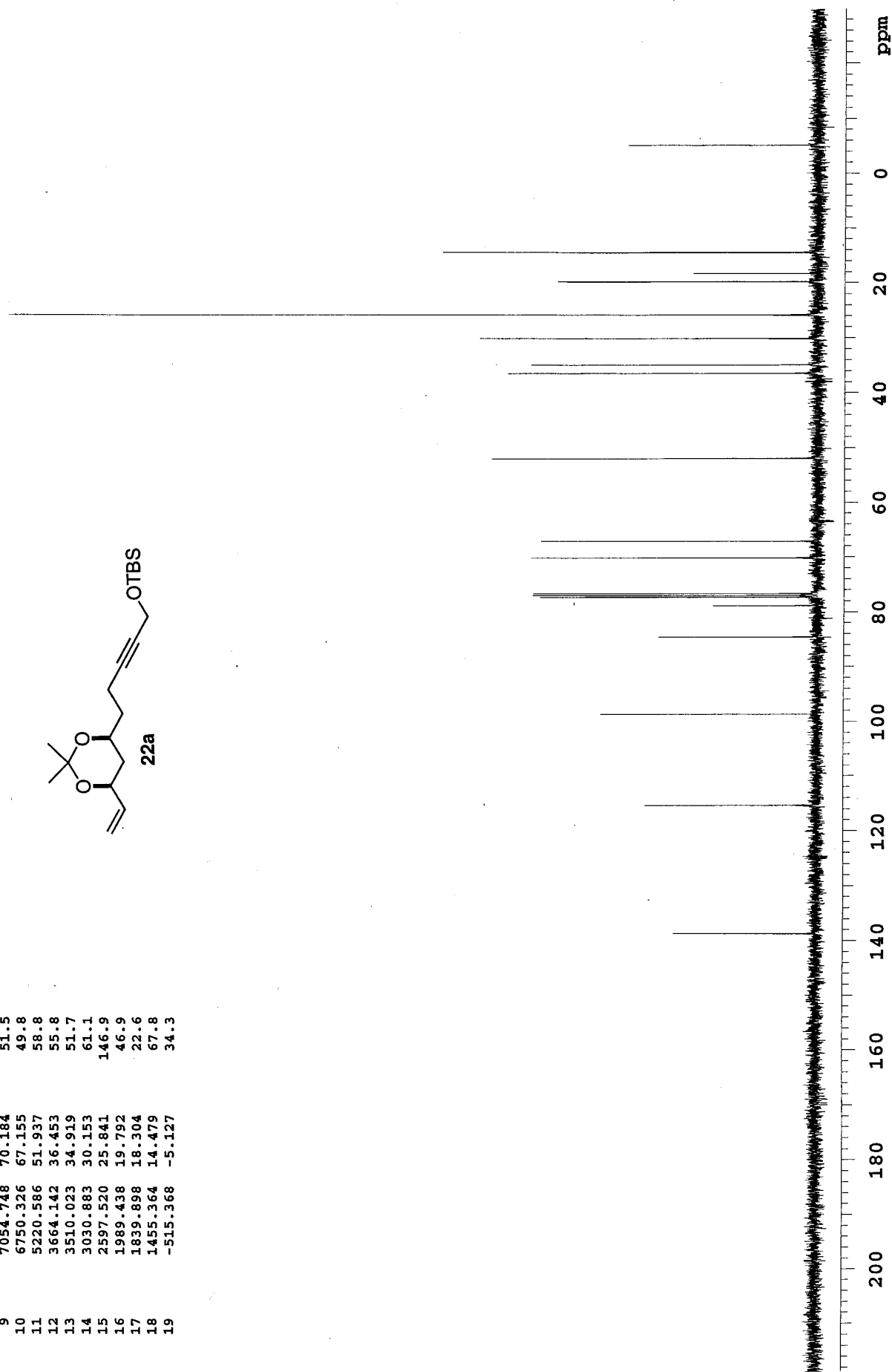
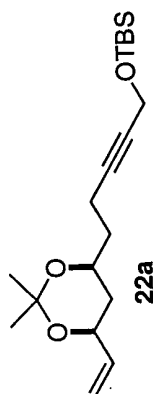
DATA PROCESSING

Ft size 16384

Total time 0 min, 6 sec



INDEX	FREQUENCY	PPM	HEIGHT
1	13942.776	138.709	25.9
2	11598.954	115.392	31.0
3	9920.436	98.693	39.0
4	8502.851	84.590	28.6
5	7925.288	78.844	18.8
6	7771.933	77.319	49.9
7	7739.889	77.000	51.2
8	7707.844	76.681	51.1
9	7054.748	70.184	51.5
10	6750.326	67.155	49.8
11	5220.586	51.937	58.8
12	3664.142	36.453	55.8
13	3510.023	34.919	51.7
14	3030.883	30.153	61.1
15	2597.520	25.841	146.9
16	1989.438	19.792	46.9
17	1839.898	18.304	22.6
18	1455.364	14.479	67.8
19	-515.368	-5.127	34.3



Yg6-13f2

Pulse Sequence: s2pul

Solvent: CDCl3

Ambient temperature

INOVA-400 "fid"

PULSE SEQUENCE

Pulse 51.3 degrees

Acq. time 1.638 sec

Width 5000.0 Hz

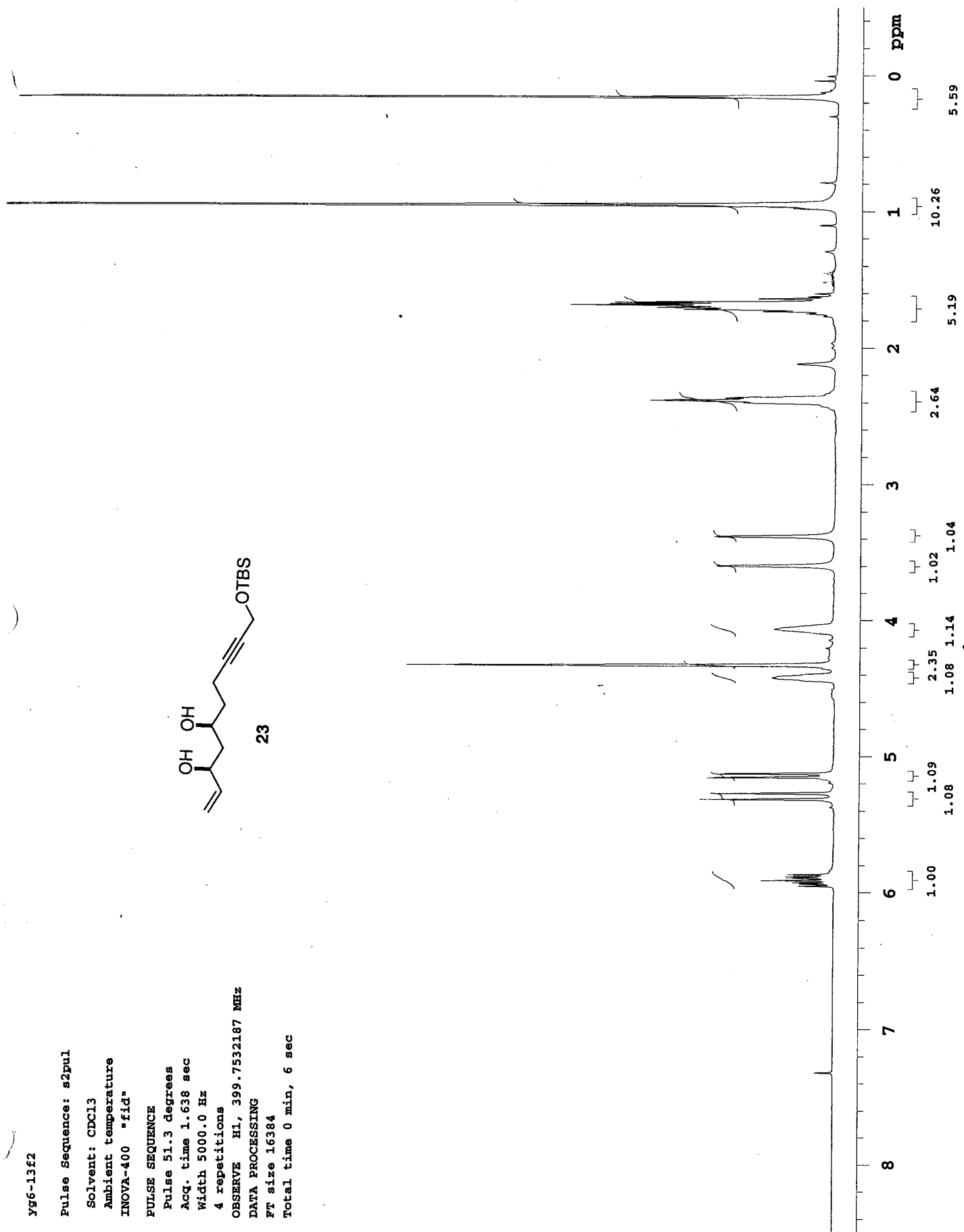
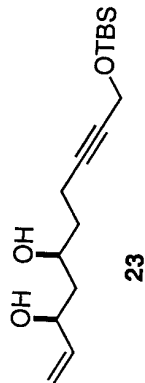
4 repetitions

OBSERVE H1, 399.7532187 MHz

DATA PROCESSING

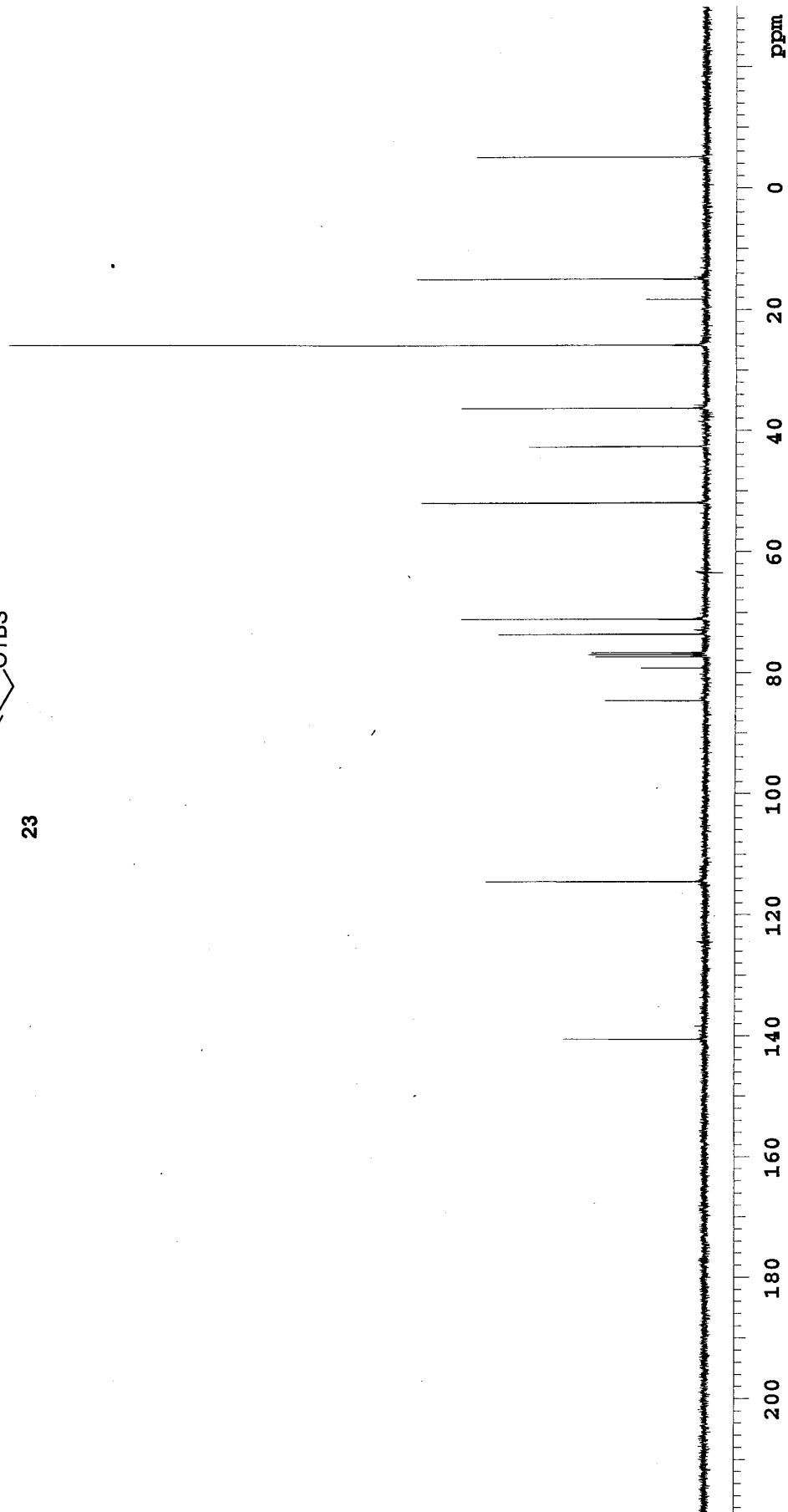
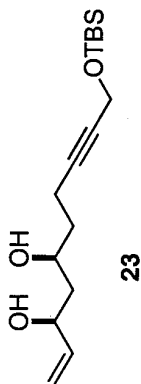
FT size 16384

Total time 0 min, 6 sec



YGB

INDEX	FREQUENCY PPM	HEIGHT
1	14126.650	140.538
2	11507.399	114.481
3	8505.903	84.621
4	7959.622	79.186
5	7771.933	77.319
6	7739.889	77.000
7	7707.844	76.681
8	7395.793	73.577
9	7147.830	71.110
10	5216.771	51.899
11	4285.956	42.639
12	3645.068	36.263
13	2593.705	25.803
14	1836.083	18.266
15	1501.905	14.942
16	-519.946	-5.173



Yg7-25f1

Pulse Sequence: s2pul

Solvent: CDCl3

Ambient temperature

File: Yg7-25f1

INOVA-500 "cosy"

Pulse 51.3 degrees

Acq. time 1.638 sec

Width 5000.0 Hz

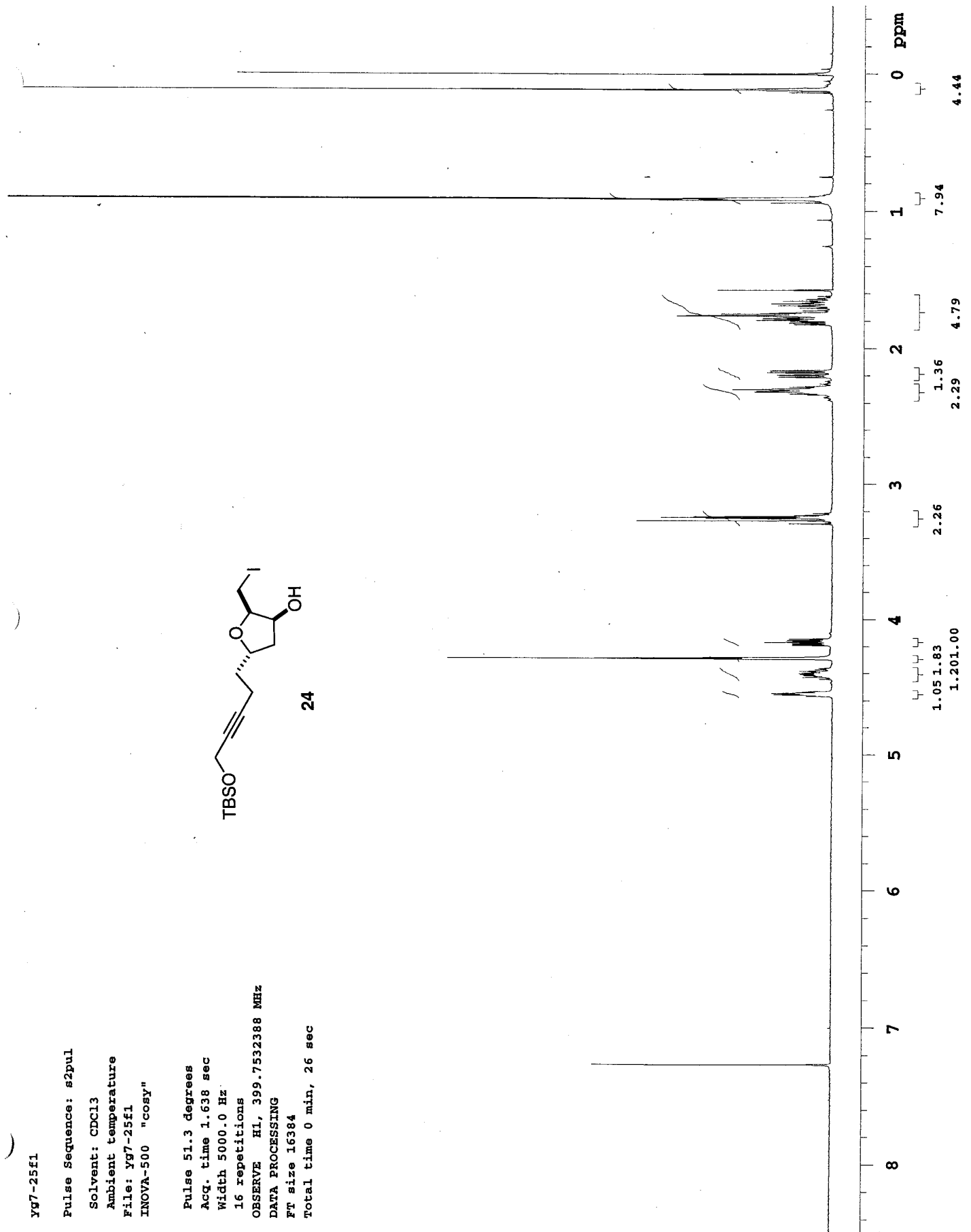
16 repetitions

OBSERVE H1, 399.7532388 MHz

DATA PROCESSING

Ft size 16384

Total time 0 min, 26 sec



INDEX	FREQUENCY PPM	HEIGHT
1	8483.014	17.2
2	8253.363	37.5
3	7939.022	14.7
4	7840.600	39.0
5	7771.933	27.8
6	7739.889	29.5
7	7707.844	29.8
8	7311.867	34.4
9	5220.586	56.6
10	4139.467	37.9
11	3506.971	51.2
12	2597.520	100.0
13	1839.898	11.1
14	1565.231	50.1
15	202.580	43.4
16	-515.368	43.8

